

End-to-End

The Parish Magazine of Rivenhall and Silver End



A Sailing Boat in the Middle of the Ocean
what does this Conjure in your Mind?

1 Peace and Solitude?

2 Danger particularly if you are a solo Yachts person?

3 Adventure! doing something different from your everyday life

Jesus fasted "forty days and forty nights" in the Judean desert (Matthew 4:2, Mark 1:13, Luke 4:2). Forty days was the period from the **resurrection** of Jesus to the **ascension** of Jesus (Acts 1:3).

Lets hope & pray that 40 days will see the worst of the pandemic gone and a life more normal resume including singing in church!

February

2021

50p

The Following are services we planned for February
However unless the current situation changes dramati-
cally it is unlikely services will resume before early
March

7th February

9.30 am St Francis

11 am St Mary's

14th February

9.30 am St. Francis

11 am St Mary's

17th February

7.30 pm

21st February

9.30 am St. Francis

11 am St Mary's

28th February

9.30 am St. Francis

11 am St Mary's

2nd Sunday Before Lent

Private Prayer

Morning Prayer

Sunday Next Before Lent

Private Prayer

Morning Prayer

Ash Wednesday

Private Prayer

1st Sunday of Lent

Private Prayer

Morning Prayer

2nd of Lent

Private Prayer

Morning Prayer

Church Contacts

Team Vicar Rev. Paul Watkin

Churchwarden Ann Clarke

Churchwarden Peter Hope

Rivenhall Contact Carole McCarthy

Silver End Contact Ruth Aitken

Rivenhall Website

St Francis Silver End Website

Rivenhall Website

St Francis Silver End Website

01376 583930 psgw100@aol.com

01376 514825

01376 502605

01376 512781

01376 583846

www.stmarysrivenhall.co.uk

www.st-francis.org.uk/

www.stmarysrivenhall.co.uk

www.st-francis.org.uk/

Contact the Editor 07904 235101 or phope02@gmail.com

Some thoughts for February from your Team Vicar.

As one season draws to a close another begins, and from a church season point of view this is certainly true for February. On the 2nd we celebrate the feast of Candlemas, (or the Presentation of Christ in the temple), and this is the day which completes our observance of the seasons of Christmas and Epiphany. Thinking back to my curacy for a moment, one of the churches in the parish team left a small decorated Christmas tree up by their notice board right until the day of Candlemas, so as it could be seen from the road as people walked or drove past. Just now and again somebody would mention that the 'the church has forgotten to take it's Christmas tree down', or something similar. But it acted a reminder that the celebration of the festive season actually passes all the way through January and into this month.

The account of the events of Candlemas will be familiar to most of us, and can be found in Luke 2:22-39. But as much as it marks the end of a church season, it looked forward in time as well as in hope. When Mary and Joseph brought Jesus to the temple they encountered Simeon and Anna, who had received insight through the Holy Spirit into something of Jesus' later life on Earth. Insights which they shared with his earthly parents too, and which unfolded throughout Jesus' ministry, and then into what we know as the events of Holy Week and Easter. Though some of the words spoken to Mary and Joseph would almost certainly have been both unexpected, and difficult to absorb, they would at the same time surely have provided renewed assurance of the continued fulfilment of the hope of God's promise to them. (Perhaps similar to the way in which the symbolism of the gifts from the Magi may well have done too). As today's readers of Luke's Gospel these words are shared afresh with us, but it's up to us to pay attention to what the scriptures are saying in our own generation. One of the things which I believe that we can see here is a message of hope for us too – some 2000 or so years later. They remind us that Jesus stood up for genuine love and real justice, even when by human standards the odds may have seen to be stacked against him, and the cost would at times be high (Luke 2:34-35). As disciples of Jesus we too are called to stand up against injustice and for equality and the freedom for all people, as well as to welcome all into God's family of divine love.

In connection with this, I am absolutely delighted to tell you that at our December PCC meeting (held of course by way of video conferencing!), we unanimously passed the motion to join Inclusive

Church. For anyone who may be unsure what this means, it affirms that we are a church where everyone is welcome and which celebrates the diversity of humanity and society. A church where all people are free to be themselves; the people who God made us to be. It is a network of churches, groups and individuals uniting together around a shared vision:

"We believe in inclusive Church - a church which celebrates and affirms every person and does not discriminate. We will continue to challenge the church where it continues to discriminate against people on grounds of disability, economic power, ethnicity, gender, gender identity, learning disability, mental health, neurodiversity, or sexuality. We believe in a Church which welcomes and serves all people in the name of Jesus Christ; which is scripturally faithful; which seeks to proclaim the Gospel afresh for each generation; and which, in the power of the Holy Spirit, allows all people to grasp how wide and long and high and deep is the love of Jesus Christ."

<https://inclusive-church.org/>

The origins of Inclusive Church are found within the Church of England, but it has become an ecumenical organisation, which membership representation from other denominations too. Part of the springboard for us coming to join at this time is the very recent publication (November 2020) of the new Church of England book and associated resources of "Living in Love and Faith" (LLF). These publications explore Christian teaching and learning about identity, sexuality, relationships and marriage, and are introduced by the Archbishops of Canterbury and York – the latter of which of course being our previous Diocesan Bishop: Stephen Cottrell. These are wonderful, forward looking resources which I would like to invite you to explore with me:

Following a Chelmsford Diocesan introductory day for clergy which I recently took part in, I'm planning to run a study course using these this Lent. This will be done by using 'Zoom' video conferencing, and which is open to everyone who would like to be involved. If you're interested in doing so, do get in touch with me by way of a phone call: 583930 or email: psgw100@aol.com and I'll be delighted to tell you more and supply further details of how to take part. As a final part to our thinking about this, I'm sure that you'll be as excited as I am to be welcoming the Rt Rev Dr Guli Francis-Dehqani (currently The Bishop of Loughborough), as the new Bishop of Chelmsford a little later on this year. As a point of interest, she is one of the twelve bishops nationally who will be serving on the Next Steps group for the LLF project.

With Easter on the earlier side this year the season of Lent begins, as ever with Ash Wednesday, on the 17th. A question for some might be to ask: how do we enter into the discipline of Lent when life feels so restrictive anyway? Now it may be that you feel as able as ever to give up crisps, chocolate, alcohol or something else as you might any other year. But if this is not the case with all that is going at the moment, please don't be dismayed – for you are far from being alone. I think that the most important commitment which any of us can make to our own discipline of faith, is to make sure that we take the time to pray. When and how to do so is a decision for each of us to make. But the important thing is that we do. Now this might seem like a remarkably basic thing to say, but spending time in prayer – talking to and listening to God is essential for our faith, and something which can sometimes slip over time.

Aside from Sunday worship, I continue to pray the Daily Office each day, with most mornings this being with colleagues and others from our parish and team. As a reminder, if this is something which you'd also like to try taking part in, even if just now-and-again, do get in touch and I'd be pleased tell you more. Or perhaps you find it easier to pray in the evening or at another time during the day. Perhaps you enjoy using a well-worn old prayer book. Or you might favour using an 'App' on a smartphone, or maybe you simply like to pray using your own thoughts and words, or by quietly contemplating a short passage of scripture in your heart. All of these are worthwhile, and all valid expressions of prayer, and many people will use a combination of some or all of these, or find other ways, as part of their prayer life. But however you pray, may I commend to each and every reader that you do. Prayer for others, our communities, our nation, and the world – and don't forget yourself! Maybe ask God to help you to be your very-best self, and to know Jesus even more fully each day.

On Ash Wednesday (17th) itself at 7.30pm, I'll be preaching at joint team service which will be live-streamed on the St Nicolas' Witham Facebook page: www.facebook.com/stnicswitham If you're able to, do go long there then in order to take part. Plus don't forget that I continue to live-stream Holy Communion services every Sunday at 3.30pm on the Rivenhall & Silver End Facebook page: www.facebook.com/parishRHSE to which everyone is very, very, welcome. I've also been live-steaming Bible Story Time, again on the Rivenhall and Silver End page at 12 noon every Wednesday. This is especially suitable for younger and primary school aged children, with a Bible story followed by some craft activity and simple prayers. But as with all of our online services and events, everyone is invited to

take part. You don't even need to have a Facebook account as they are all publicly accessible. If you don't have one, just click 'not now' if you're asked to log in.

But if you're not online, don't forget about the Church of England 24 hour telephone Daily Hope dial-in worship service, which can be called at any time on: 0800 804 8044 Alongside all that is available on television and radio as well.

We continue to live in very unusual and challenging times, but even as our church buildings remain closed the hope of God remains, and we can find new and innovative ways to connect with the life of the church, worship together, and to keep in touch with one another too. However you mark and begin Lent this year, I pray that you might know God's limitless love for you, and a sense of being held by our Lord no matter what the month ahead brings.

Paul Watkin

Readings and Collects for February 2021

7th February 2nd Sunday Before Lent

Readings

Proverbs 8:1,22-31

Colossians 1:15-20

John 1:1-14

Collect

Almighty God,
give us reverence for all creation
and respect for every person,
that we may mirror your likeness
in Jesus Christ our Lord.

14th February Sunday next Before Lent

Readings

2 Kings 2:1-12

2 Corinthians 4:3-6

Mark 9:2-9

Collect.

Holy God,
you know the disorder of our sinful lives:
set straight our crooked hearts,
and bend our wills to love your goodness

and your glory
in Jesus Christ our Lord.

17th February Ash Wednesday
Readings

Isaiah 58:1-12

2 Corinthians 5:20b-6-10

John 8:1-11

Collect

Almighty and everlasting God,
you hate nothing that you have made
and forgive the sins of all those who are penitent:
create and make in us new and contrite hearts
that we, worthily lamenting our sins
and acknowledging our wretchedness,
may receive from you, the God of all mercy,
perfect remission and forgiveness;
through Jesus Christ your Son our Lord,
who is alive and reigns with you,
in the unity of the Holy Spirit,
one God, now and for ever.

21st February 1st Sunday of Lent
Readings

Genesis 9:8-17

1 Peter 3: 18-end

Mark 1:9-15

Collect

Almighty God,
whose Son Jesus Christ fasted forty days in the wilderness,
and was tempted as we are, yet without sin:
give us grace to discipline ourselves in obedience to your Spirit;
and, as you know our weakness,
so may we know your power to save;
through Jesus Christ your Son our Lord,
who is alive and reigns with you,
in the unity of the Holy Spirit,
one God, now and for ever

28th February 2nd Sunday of Lent
Readings

Genesis 17:1-7,15-16

Romans 4:13-end

Mark 8:31-end

Collect

Almighty God,
by the prayer and discipline of Lent
may we enter into the mystery of Christ's sufferings,
and by following in his Way
come to share in his glory;
through Jesus Christ our Lord.

The 50/50 Club January 2020 winners

1st B Hagan 2nd J Riddlestone 3rd D Atkinson

RIVENHALL PARISH COUNCIL

NOTES OF COUNCIL MEETING HELD ON 5TH JANUARY 2021

HELD ELECTRONICALLY DUE TO THE COVID-19 HEALTH RESTRICTIONS

All councillors took part via email

These notes are an abridged version of the minutes

Matters for Discussion

Format of Annual Parish Assembly and Annual Parish Council Report

The Annual Report will be compiled as in previous years by the Clerk and the Chairman. Distribution by hand will be kept under review as that may not be possible due to Covid-19 restrictions, in which case the report will be published on the RPC website and facebook page.

Consideration may also be given to holding the Annual Parish Assembly remotely via Zoom if necessary.

3 Parishes meeting

The best date to avoid other council meetings will be 1st February 2021.

Highway Maintenance

Further winter flooding has occurred in the same locations as last winter. The Highways England pump room within the A12 underpass structure was again flooded and HE laid the blame at

ECC for not maintaining the local kerb gullies. ECC has since attended on site to clear them and the ECC Highways Cabinet Member has indicated that a new scheme is being drawn up to replace the old gully system.

Other repeat flood locations have again been reported by the Chairman to ECC, with photos taken by himself and residents. The main repeat flood locations/causes (in addition to under the A12) are:

The blocked gullies at Henry Dixon Road near the railway bridge and the water coming down Oak Road from a blocked drain;

Blocked kerb gullies at the junction of Rickstones Road and Church Road and water coming out of a blocked gulley on Rickstones Road below Stoverns Hall Farm;

and there has been extensive further correspondence with ECC re the flooding on the road and footpath in the area of the junction with Rickstones Road and Rectory Lane. A meeting has been requested to discuss measures to prevent long-standing known sources of water from private land causing the flooding with the most important issue being the volume of water being discharged from a pipe on the John Ray Walk.

ECC Highways are due to commence work to repair potholes and footways in several locations within the parish and to trim back branches from streetlights and utility wires.

A further repair to the new HGV height warning signs on Rickstones Road appears to have been successful.

The other pair of signs in Church Road appear to be working as intended.

General Maintenance

The maintenance contractor has been requested to replace the rotten posts on the Village Green along Rickstones Road.

A reply is awaited from the council's insurers re the claim for the repair to the damaged glass bus shelter on Rickstones Road.

Planning Applications

20/02032/HH: Single-storey extension at 5 Beech Road.

Dealt with between meetings. 'No Comments' response to BDC.

20/02060/OUT: Outline application from Bellway for another phase of development of housing, on land off Rectory Lane. It was **agreed** that the Council's response to this consultation would be a strongly

worded recommendation to BDC to refuse this application.

20/02113/HH: Rear extensions at Park Gate Farm House, Park Road.

Dealt with between meetings. 'No Comments' response to BDC.

20/02106/HH: Extensions to 309 Rickstones Road.

No comments were raised regarding this application.

20/02130/HH: Front extension to 4 Foxmead, Rivenhall End.

No comments were raised regarding this application.

20/02210/NMA: Change to front render – 451 Rickstones Road.

Agreed by majority decision, 'No Comments' response to BDC.

Planning Enforcement

BDC continues to progress enforcement issues with Bellway re the housing site off Rickstones Road. Since the action was commenced there have been further matters raised with BDC including the raised bridge built from scaffold poles in Rectory Lane, which is very different to the low-profile bridge as consented for access to the temporary car park.

Ongoing Major Issues

BDC Local Plan

BDC has now been given the go-ahead by the Local Plan Inspector to proceed to Section 2 of the Local Plan, following removal of two Garden Communities from Section 1. Public consultation on Section 2 will take place in 2021.

Colemans Quarry

The next quarry liaison meeting is scheduled for 3rd February. Outcomes will be reported as normal to the following parish council meeting.

Braintree Local Highways Panel

The next meeting, to be held using video conferencing, is scheduled for 28th January 2021.

Finance - to agree the Budget/Precept figures for 2021/22

It was **agreed by a majority decision** that the Budget for 2021/2022 be confirmed at £13,240 with the Precept set at £12,300, leaving a possible shortfall of £940 to be met from balances.

Dates of future meetings

2nd February and 2nd March but both probably convened electronically.

If residents wish to raise any matters with the parish council, please contact the Clerk:

Telephone (01376) 516975

Email: parishclerk@rivenhallparishcouncil.net

Recipe for February Easy Vegetable Fried Rice Recipe

When you are making a stir fry like this, you want to make sure all of your ingredients are cut and ready to go before you begin the cooking process — once you start cooking, it goes very quickly and there's no time to pause or chop veggies.

Prep time: **15 minutes**

Cook time: **15 minutes**

Yield: **4 servings**

INGREDIENTS

- 3 tablespoons vegetable oil
- 1 cup chopped broccoli (crowns and stems)
- 1 cup chopped carrots
- 1 cup shredded cabbage
- 1 cup diced courgettes
- 1/2 cup thinly sliced red pepper, cut into 1-inch pieces
- 1 cup frozen peas
- 3 large eggs, beaten
- Salt and freshly ground pepper to taste
- 3 cups cooked and cooled white or brown rice
- 1 tablespoon peeled and minced fresh ginger
- 2 teaspoons finely minced garlic
- 3 tablespoons regular soy sauce and 1 tablespoon water
- 1 tablespoon sesame oil (regular or spicy)
- 1/2 cup thinly sliced spring onions

Wok or large skillet

METHOD

1 Cook the veggies: Heat a wok or a large skillet over high heat until very hot. Add 1 tablespoon of oil, and then the broccoli, carrots, cabbage, courgettes peppers and peas. Stir often until the vegetables are crisp-tender, about 4 minutes (they will get another few minutes to cook at the end of the stir fry so it's ok if they're still crunchy right now). Transfer them to a plate and set aside.

2 Scramble the eggs: Season the beaten eggs with a little salt and pepper. Heat 1 more tablespoon of oil in the same wok or skillet over high heat. Add the beaten eggs and scramble quickly, just about 1 minute. When they are just cooked through, slide them out onto the plate with the vegetables.

3 Stir fry the rice: Return the wok to the burner over high heat, add the remaining tablespoon of oil, then add the cooled rice . Stir fry, stirring occasionally, until it is lightly browned in spots, about 5 minutes. Add the ginger and the garlic to the rice, and stir until they're fragrant, about 1 minute. Add the soy sauce, sesame oil, and 1/2 cup spring onions.

4 Finish the stir fry: Return the vegetables and eggs to the wok with the rice. Cook, stirring often, until everything is combined and hot and the vegetables are just tender, about 3 minutes. Taste and adjust the seasonings with salt and pepper, if needed.

5 Garnish and serve: serve on warm plates and use extra soy sauce or your favourite garnish

This recipe is a guide. You can halve it or double it! Change the vegetables to your favourite. I leave out the egg and add a curry sauce, or a cheese sauce!

ANGLIA TREE SERVICES

Specialist tree surgery

Residential & Commercial Customers

CROWN REDUCTION • FELLING • TOPPING

HEDGE TRIMMING • ALL GARDEN WORK

STUMP GRINDING

For a quick, tidy and friendly service call:

Tel: 01621 892831



7 DAYS A WEEK • EMERGENCY SERVICE AVAILABLE • FULLY INSURED



**CONNECTED CABS
WITHAM**

01376 317777



 **Wheelchair Accessible**

All fares fixed price (no meters)

Card payments accepted in cars



Prices from Witham:-

Hospitals

Broomfield	£22
Colchester General	£25
Springfield	£18
St Peters/ Braintree	
Community	£15
Maldon	£15

Airports

Stansted	£40
Heathrow all Terminals	£96
Gatwick	£95
London City	£75
Southend	£50
Loton	£95



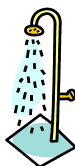
Philip Little

Property Maintenance Magician

Local service at local prices

Knowledgeable and friendly

07973 129808 or 01376 515257



David Grist



Furniture Polishing

Antique and modern furniture hand stripped and polished.

Tables, chairs and cabinets.

Small repairs carried out.

Prices from £50.

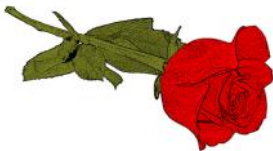
Telephone 07909 974668

Email: furniturepolishing@outlook.com

Serving the Local Community for over 125 Years

G. COLLINS & SONS

Funeral Directors Ltd



30 RAYNE ROAD, BRAINTREE, CM7 2QH

01376 342266

4 THE STREET, WHITE NOTLEY, CM8 1RH

01376 583750

WWW.GCSFD.CO.UK

Beautiful Rooms For Rent In Witham & Braintree

We have 4 Lovely houses
2 in Witham—2 in Braintree
With and Without en-suites
£90—£130 per Week

(All inclusive of Rates, Light, Heat, and with Broadband)

See our Website:- www.jbwpartners.co.uk

Or Call

John

07850 161629

Mavis

07714 579783

Michelle

07966 323914

**HELP WITH
FUNERAL ARRANGEMENTS
RICHARDS
FUNERAL SERVICE**



01376 513114

78 Newland Street, Witham, CM8 1AH

From advice on how to register a death to making all the arrangements, we're here 24 hours a day.

Members of the National Association of Funeral Directors
A British Owned Company www.dignityfuneral.co.uk

SpeedyBroadband.co.uk

***Sick Computers my
Speciality***

- Home Networking Problems Sorted Out
- Computer Viruses Removed
- Operating System Upgrades
- Upgrade to Windows 10

**FOR YOUR FREE SURVEY AND
QUOTATION CONTACT**

Peter Hope

peterhope@speedybroadband.co.uk

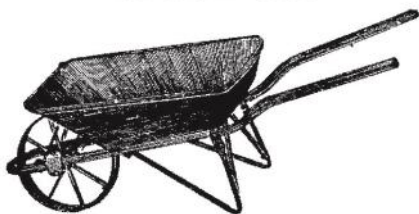
Tel: 01376 502605

Mob: 07904 235101

Website

www.speedybroadband.co.uk

**Ya Garden
Cares**



**Thorough Attention on
Bed Maintenance,
Mowing & Clearance**

**Telephone
Barry: 07732337626**

Burns Supper 2020 just a reminder there was a time when we could mingle.

BURNS NON-SUPPER

At this time of year we would normally have enjoyed haggis, dancing and good company as we celebrated Burns Night in Silver End Village Hall. Alas, this year we will just have to follow the words of the immortal bard and remember our friends via social media.

*Should old acquaintance be forgot
And never brought to mind?
Should old acquaintance be forgot
For the sake of auld lang syne?
And there's a hand my trusty friend*

*And gie's a hand o' thine
And we'll take a right guid-willie
waught (good will drink)
For auld lang syne*

*For auld lang syne my dear
For auld lang syne
We'll take a cup of kindness yet
For the sake of auld lang syne*

Lets hope that next year we will be able to extend the hand of friendship, resume our social lives and all take a drink together.

Jackie Allan



**And is this how we will remember Christmas 2020?
The Service on Christmas Day!!**

We have had some heavy Rain Lately here are some pictures from around the Village Water Golf Anyone



Its Called a stream
(Rivenhall Brook)
its looked a bit like
the Thames lately.

Sky Notes February 2021

Daylight hours expand more rapidly through February. By the end of the month the Sun is rising at 6.45 am and setting just after 5.30 pm. On 28th February the Sun when due South is 30 degrees above the horizon (a third the way up the sky) which is about double the height when at the Winter Solstice.

Mars is still well placed at the start of the month, high up in the South as it gets dark and a similar brightness to the star Aldebaran, which can be seen to the left of Mars and is a similar orange colour. But by the end of February Mars has faded a bit and moved closer to Aldebaran. Mars will also by then be close to the Pleiades, a cluster of stars that can be seen with the unaided eye as a hazy patch but which in binoculars is a beautiful sight with dozens of white and bluish stars close together.

The Pleiades, also known as the Seven Sisters, is a cluster that formed within the past 100 million years, which is very young in astronomical terms and only about 1/50 the age of our Sun. The cluster is also relatively close to us at a distance of about 400 light years.

All the other bright planets are close to the Sun this month and so not visible.

The February Full Moon will be on the 27th.

By mid-month, Arcturus, the brightest star in the Northern sky, is well clear of the horizon in the East by 11 pm. A traditional herald of Spring, Arcturus is a Greek name meaning "Guardian of the Bear", as it appears to follow the Great Bear (Ursa Major) around the sky. In the hours before midnight in the early Spring if you follow the stars that mark the tail of Ursa Major downwards in a curve, it points to Arcturus.





Here are some Pictures from a recent walk; the Estuary at Heybridge basin



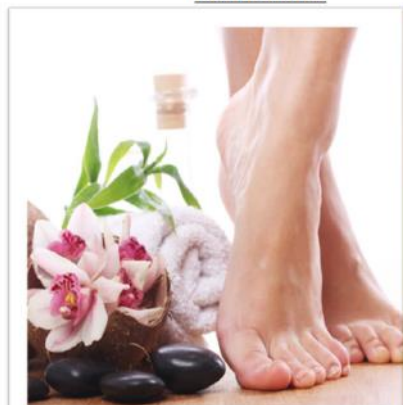
These are some of the birds mentioned in Simon Taylors Nature Care article I recognise the Robin

FOOT HEALTH PRACTITIONER



THE SMAE INSTITUTE

HOME VISITS



NAIL
TRIMMING

CORNS

CALLUS

THICK NAILS

HARD SKIN

COVERING:

Chelmsford

Witham

Danbury

Stock.....

JAMES NEWMAN (MCFHP,MAFHP)

TELEPHONE: 01376 519036

MOBILE: 07793971351



Brookend
VETERINARY PRACTICE LTD

62 Braintree Rd Witham

**CARING FOR THE PETS OF WITHAM AND
THE SURROUNDING AREA FOR 25 YEARS**

SPECIAL O.A.P. SURGERY THURSDAYS

CAT ONLY CLINIC WEDNESDAYS

Late night surgery Wednesday till 8pm

**Surgery Opening hours
Monday to Saturday for appointments**

Tel: 01376 500038

www.brookendvets.co.uk



PC Doctor
Operations Limited

**For all your computer
requirements including:**

Virus prevention, detection & removal
Broadband, Networking, Wireless & Firewall set up
Email & SPAM filtering
Hardware Repairs & Upgrades
Software Faults & Crashes
Backup Solutions & Data Recovery
Software Installation & Removal
Hardware & Software Supplied
Website Management • Computer Training

**Health
Checks
£39.99**

Office: 01621 891064 • Mobile: 07990 565336

Email: support@pcdocops.co.uk

Website: www.pcdocops.co.uk

Monthly subscription service available to provide complete "peace of mind" and allow you to spread the cost of your IT requirements.

Please contact for further information.

REYNOLDS

CARPENTRY SERVICES

**For all Carpentry, Joinery
& Cabinet Making Requirements**

CSCS Registered

30 Years Experience

4 Years Apprenticeship

City & Guilds and

Advanced City & Guilds Qualified

Free estimates – No obligation

All building work considered

Can also make items to order

also

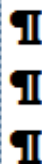
**'curtain poles, tiling, flat packs,
kitchens, doors, sheds etc, no jobs
too small'**

Contact

07889 110962

Answer phone at other times

Jeremy Larke Television services



Telephone: 01376 513645

Mobile: 07947 601619

Email: telerepair@aol.com

All Television Systems Catered
for Freesat, Freeview, Sky

- Installations & Repairs To all makes and models
- Full Plasma & LCD Fitting Service
- Wall Mount Brackets Supplied and Fitted
- Aerial & Satellite Dishes Fitted
- Freeview, Freesat & European Channels
- View and Control Your Sky in Other Rooms
- Aerial and Telephone Extension Points Installed



Don't Delay Call Today

Janet C Davies

Dip. F.D. M.B.I.F.D

**BRAINTREE & KELEVEDON'S LADY FUNERAL
DIRECTOR**

Offering a full and Comprehensive Funeral Service

Telephone 01376 339300

For a Personal and Caring 24 hour service

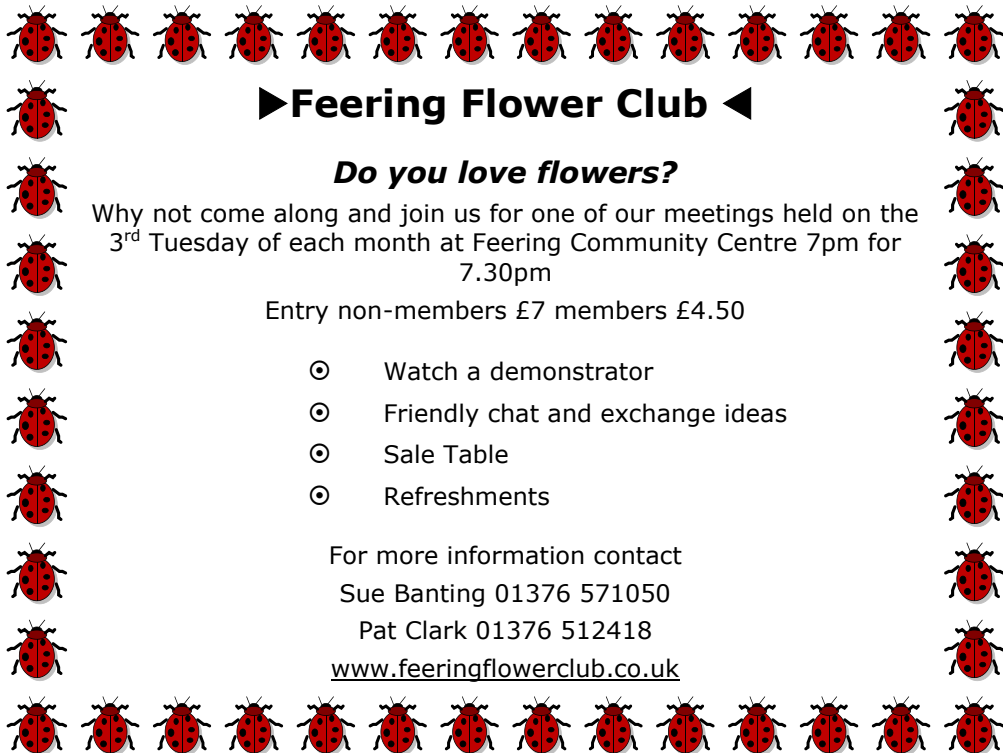
Local Chapel of Rest at Fern House 72 Coggeshall Road Braintree and
Victoria House, Trews Gardens, Kelvedon

Funerals are arranged and carried out in the Traditional Manner but
With 'The Gentle Touch'

Pre payment Plans available—Floral Tributes arranges—Woodland Burials
Bereavement Care—Low Cost Simplicity Funerals - Memorials—Printing
Catering—DWP Funerals

Part of the Hunnaball Family Group

Members of the National Association of Funeral Directors



►Feering Flower Club ◀

Do you love flowers?

Why not come along and join us for one of our meetings held on the 3rd Tuesday of each month at Feering Community Centre 7pm for 7.30pm

Entry non-members £7 members £4.50

- ⊙ Watch a demonstrator
- ⊙ Friendly chat and exchange ideas
- ⊙ Sale Table
- ⊙ Refreshments

For more information contact

Sue Banting 01376 571050

Pat Clark 01376 512418

www.feeringflowerclub.co.uk

DANIEL ROBINSON & SONS

Incorporating
W C BROWN & SONS

Independent Family Funeral Directors & Monumental Masons

A professional, caring, 24 hour service

Private Chapel of Rest

Fleet of air conditioned limousines

Horse drawn funerals available

Traditional and contemporary funeral services to suit your wishes

Funeral pre-payment plans

Arrangements may be made in the comfort of your own home, if preferred

Haslers Lane
Great Dunmow
Tel: (01371) 874518

7 Manor Street
Braintree
Tel: (01376) 320582

31 High Street
Halstead
Tel: (01787) 475533

www.drobinson.co.uk

Turning the pages of History

Research by Tracy Scott

This month we start off in February 1897 in Rivenhall End where Mr. Willmott (78) who was the father of our new Rector of Rivenhall was walking in the dark when he narrowly escaped drowning. The night was very dark when he walked into a deep and dangerous pond near Pond Farm. He called for help and was luckily heard by Mr. Kellock and his son who lived at the farm. When they reached him he was up to his shoulders in water. Mr. Kellock and his son managed to pull him out.

(I would say that the pond would have been between the railway line and the farm house and would have been filled by a spring of which Rivenhall End has many)

Yes, it was that big!

At the Rivenhall Lake 1907 Mr. A. Knightbridge of Maldon landed two jacks (pike) weighing 17lbs and 18lbs. With Mr. Knightbridge was local Mr Ernest Wade who also caught a smaller one weighing about 3-4lbs. They quoted them as great specimens.

1931 Rivenhall celebrated the tenth anniversary of the induction of the Rev. A. Hunt being Rector of Rivenhall and Silver End. The celebration took part in the Church Hall with a company of 150 guests. They enjoyed games, dancing and songs. Refreshments were given by the host. The M.C. Mr. W. Bedford gave thanks to the Rector and Mrs. Hunt for their kindness.

Also this month of the same year the Women Institute gave a treat to about 80 of the village children where they sat to tea and after played games. They finished the evening with an entertainer who performed conjurer ticks and had a ventriloquist doll.

Moving onto Silver End in 1930 the British Legion held a Sausage Supper and Social Evening with about 80 members at the Hotel. A musical programme was given along with songs, sketches and jokes. Performers included Messrs W. A Price, G. Bevers , W. H. Keen, Mr. Price, Mr. R. M. Smith, M. C. Thomson. Mr. Lake from Ipswich the administrative agent and Mr Beatt the county Hon. Secretary gave addresses and also remarked that the name Crittall was a great example to the Legion in Essex. Mr. D. F. Crittall presided.

And we end this month in 1944 at the Congregational Church in

Silver End and the young people gave a variety concert and pantomime and raised £8 towards the Manse Fund. Those that took part: Pat Scrivener, Thelma Smith, Sylvia Sharp, Brenda Ball, Dorothy Kettly, Ann Watson and eight Sunday School children.

The pantomime 'Cinderella' was performed by Ellen Watson, Evelyn Milbourne, Kathleen Cook, Rosemary Bartlett, Marjorie Sharp, Joan Humphries, Doreen Butler, Betty Thynne and Sylvia Sharp.

Rivenhall Gardening Club

The club had anticipated that perhaps we would have been able to go ahead with our first meeting in February, however, sadly that is not the case. Please assume all meetings are cancelled unless otherwise notified. The Club sends good wishes to you all for 2021 and look forward to when we can meet up again, For any further information please contact the Club Secretary On 01376 512781

RIVENHALL SCARECROW COMPETITION

A little advanced notice

From Saturday 19 June through to Sunday 27 June this year, the Rivenhall Millennium Committee is running a village scarecrow competition for Rivenhall and Rivenhall End.

This will raise monies for the Committee's annual charitable works, including the village Christmas Tree, Christmas Carols, Chelmsford Silver Band, annual free get-together in the village hall, Christmas cards to every home in the parish, the Santa Sleigh, and of course the annual, much appreciated gifts for those aged 70 or over.

We have chosen this nine day period because it includes midsummer's day (Thursday 24th June) and it includes two weekends. This will allow people to view all the entries in good light and hopefully in glorious summer weather. Scarecrows must be viewable from the road or pavement by your house.

This note is to get your imagination running. Entry forms and details will be posted later. Entry will be £10 per home. Prizes will be awarded to the most imaginative / colourful / amusing entries. The more people we can encourage to enter, the better the prizes can be.



We're proud as a parish to be part of Inclusive Church.

A church where everyone is welcome and which celebrates the diversity of humanity and society. A church where all people are free to be themselves; the people who God made us to be.

Inclusive Church is a network of churches, groups and individuals uniting together around a shared vision:

"We believe in inclusive Church - a church which celebrates and affirms every person and does not discriminate. We will continue to challenge the church where it continues to discriminate against people on grounds of disability, economic power, ethnicity, gender, gender identity, learning disability, mental health, neurodiversity, or sexuality. We believe in a Church which welcomes and serves all people in the name of Jesus Christ; which is scripturally faithful; which seeks to proclaim the Gospel afresh for each generation; and which, in the power of the Holy Spirit, allows all people to grasp how wide and long and high and deep is the love of Jesus Christ."

<https://inclusive-church.org/>

The Sailing Boat (on the cover) by Peter Hope

The sailing boat on the cover is a bit of family history (for the Editor) which I feel worth sharing. Over many years of holidaying Clare would ask me to take a picture of a solitary sailing boat which could be made into a picture/Canvas. Eventually on a holiday to Kefelonia in Greece (June 2013) I took the picture on the cover. I have often wondered about the significance to Clare of this solitary boat and the questions on the cover result from my own speculation. Or it may be that it has something to do with the following which is reproduced from a talk Clare gave in June 2015:-

When I (Clare) was 20 years old I had a boyfriend who was a keen yachtsman Every weekend and on summer evenings we would head to Maldon and sail his father's 33 foot wooden yacht I became quite a good helmsman and crew and we spent holidays sailing up

the coast to Felixstowe and the river Orwell.

Then came the big adventure .We decided to sail across to France. In those days there were no mobile phones no sat nav's and no ship to shore radio. Our parents I am sure were very concerned but to us it was such a great idea.

Four of us went on the trip, full of excitement One of the crew had completed a navigation course and so with the help of a paper map we set sail.

The forecast was set fare with winds veering force 5 to 6 This sounded ok so. off we went . Navigating the shipping lanes was scary with large vessels bearing down on us, before we turned away from them taking account of the laws of the sea. About 2 hours into our journey the wind got up and was blowing force-7 Our little boat was tossed about The distance across to France sounds quite short (21 miles as the crow flies) but on that night it seemed a long , long way and I was very frightened the rough sea can be a very lonely place an enormous expanse of darkness and the time past slowly. Then suddenly through the darkness we saw lights , land ahead Little did we realise that we had been blown off course and instead of landing at Calais we ended up along the coast in Belgium on Bastille Day a celebration dating back to 1789 I felt very relieved that we had found somewhere to land and realised that the firework display was not for us but part of the day's celebrations !

When we left Maldon we had no idea that we would experience a force 7 storm However on the sea of Galilee, storms like the one described in Mark 4 vs 35-end today are very common. It is a relatively small area 13 miles long ,seven miles wide but it is 150 feet deep and the shoreline is 680 feet below sea level Because of this and the fact that it is surrounded by mountains it is susceptible to sudden storms. Winds sweeping across the land come up and over the mountains creating downdrafts over the lake. This combined with a thunderstorm that appears suddenly over the mountains the water stirs into violent twenty foot waves .The sea can be calm one minute and violent the next These storms do not usually happen at night .

Mark Chapter 4 verse 35 to the end recalls a miracle that happened one night when the disciples were taking Jesus across the lake

The disciples who were fishermen by trade and did not expect to experience a storm that night Jesus had spent the day preaching

and he was tired , once on the boat , he quickly fell asleep. This reminds me of that night many years ago when we set sail We were tossed about by the wind and the heavy seas and just like the disciples I was frightened!

I think there are two things that stand out in this Bible passage The authority that Jesus commands and how much like us the disciples were They were shocked at Jesus reaction, just as we would be, ordinary people brought suddenly into close contact with God's power in their lives. As the waves and storm increased out of control Jesus was woken up to see the panic and anxiety of the disciples who then witness the power and authority greater than the wind and waves or of anything else in the created world. The dramatically hushed and tamed sailing conditions shock the disciples as they realise God's power and authority.

I wonder was the storm the Disciples experienced a natural storm? (It is unusual that these storms occur at night on the Sea of Galilee) Maybe God sent the storm to teach the Disciples to trust Jesus.

Throughout our lives we experience many storms, some greater than others (The Covid Pandemic? ed.). Things can be fine one minute and the next, everything can be turned upside down Storms in life may bring with them fear, anxiety and pain. At the time we think " how am I going to get through this where will I find the strength?"

Maybe we are suffering from an illness or a loved one is terminally ill Maybe we have a financial problem or have lost our job This is when we can feel alone. We do get through the storms of life with God's help and become stronger people as we grow in faith. The Bible reading helps us to understand that Jesus is always there to help us ,calming our hearts and minds . When I have been through a difficult time in my life, I often think "however did I get through that " The strength that we find comes to us through God just when we need it .

So next time you go through a storm or hear about an earthquake or some other disaster Remember Jesus is there We don't have the luxury of seeing him as the disciples did but through faith and prayer he will be there to help us through any storm.

Calm me Lord as you calmed the storm

Still me Lord keep me from harm

Let all the tumult within me cease
Enfold me Lord in your peace

Amen

End to End Nature Care.

Did you have a go at the RSPB Big Garden Birdwatch at some point over the last weekend in January? If you did then don't forget to send your results in to the RSPB (you can do it online via their website) and do feel free to share them with us too. Contact details are below, or why not post on our Facebook group "End to End Nature Care" (<https://www.facebook.com/groups/767416983842784>). Did you see any birds you think are unusual or exceptional? Could you identify every bird you saw? Did you photograph any of the birds?

One garden bird which is often overlooked is the Dunnock (Latin name *Prunella modularis*), also sometimes known as the Hedge Sparrow or Hedge Accentor, and with older vernacular names such as Winter Nightingale, Shufflewing and Hedge-e-Bet. It could qualify as what some birdwatchers call a L.B.J. (Little Brown Job), being about the size of a Robin and brown/grey in colour. As the name "Hedge Sparrow" suggests, it most closely resembles a House Sparrow, if you can imagine a female House Sparrow with a mainly grey head and breast, but is in fact not closely related to any other British bird, the name "Hedge Accentor" being perhaps the most appropriate as it is a member of the Accentor family, a group which primarily inhabits mountainous areas of Europe and Asia. Dunnocks are common birds with an estimated breeding population of over 4 million birds in the UK, resident throughout except in the Shetlands. If you have a garden then it is almost certainly visited by one.

Looking closely at a Dunnock one can see it has a narrow, pointed, robin-like beak which it uses to root about on the ground hunting for invertebrate prey; in winter they may visit bird tables but are very unlikely to attempt to use suspended feeders. They are not creatures of the tree-tops, spending most of their time in shrubby cover in which they are very well camouflaged and where they build their nests. Even now the males will occasionally emerge from hiding to perch prominently on a bush or fence to sing a bright, fluent tune, establishing their territory and announcing themselves to potential mates. The females lay clutches of 4-5 deep blue eggs

which they then incubate for about 12 days, the surviving chicks then fledging a couple of weeks after hatching. In a typical year most females will successfully rear two broods, sometimes three.

As breeders in shrub and thicket, dunnocks are unlikely to use nesting boxes. Many other birds make extensive use of boxes however and we are still offering them free of charge to local people who have a suitable place to site one. To obtain one, or if you have any old timber going spare which we could use for making boxes, or to share anything interesting regarding local wildlife then please feel free to get in touch with me via simon@e2e.silverend.org or on 07947 388180, or post in the Facebook group.

Simon Taylor

Wife texts husband on a cold winter morning:

"Windows frozen, won't open."

Husband texts back: "Gently pour some lukewarm water over it and then gently tap edges with hammer."

Wife texts back 10 minutes later: "Computer really messed up now."

**I STILL DON'T KNOW
WHAT I'M WEARING TO
THE LIVING ROOM NEW
YEARS EVE... I MIGHT
NOT EVEN GO.**

ESSEX POLICE FRAUD ALERT 8th January 2021

FAKE NHS VACCINE TEXT WARNING

Another fraudulent text message is circulating claiming to be from the NHS, encouraging people to 'apply' for their COVID vaccine.

The text message contains a link that takes recipients to a very convincing website shown below which proceeds to ask for personal and payment details.

This should be an immediate red flag, along with bad grammar and spelling mistakes, one of which can be seen highlighted in the images below.

Remember: the COVID-19 Vaccine is free via the NHS only.

It is not possible to purchase the vaccine or obtain via other methods

The screenshot shows a webpage with the NHS logo at the top left. To the right of the logo are buttons for 'Menu' and a search icon. Below the logo is a link that says '< Coronavirus vaccination'. The main heading is 'Coronavirus (COVID-19) vaccine'. Below this is the text 'Application at foot of page'. There is a yellow box with the text 'Read before applying'. Below the yellow box is a paragraph: 'Please take the necessary time to read over our information on the vaccine. It is important your choice is informed as some parties may not be recommended to take the vaccine currently.' Below this is another paragraph: 'The coronavirus (COVID-19) vaccine is safe and effective. It gives you the best protection against coronavirus.' At the bottom of the page is the text 'Who can get the COVID-19'.

The screenshot shows a webpage with a blue background. The heading is 'We will now ask some questions'. Below this is the text 'We'll ask for some information about you, including you:'. There is a list of questions: 'Name', 'Date of birth', 'Address', 'A payment card (to check billing)', and 'Proof of address'. Below this is the text 'We ask this so we can:'. There is a list of questions: 'Get the right mix of different people taking the vaccine', 'Confirm identity', and 'Confirm ownership of address'. The word 'ownership' is highlighted with a red box. At the bottom of the page is a button that says 'Continue'.



If you or someone you know is vulnerable and has been a victim of fraud, please call **Essex Police on 101**
Report fraud or attempted fraud by contacting **Action Fraud** at actionfraud.police.uk or call 0300 123 2040

Keep up to date with fraud and do *even more* Online at essex.police.uk

CALL ESSEX POLICE
101
IN AN EMERGENCY ALWAYS CALL 999

Hello!

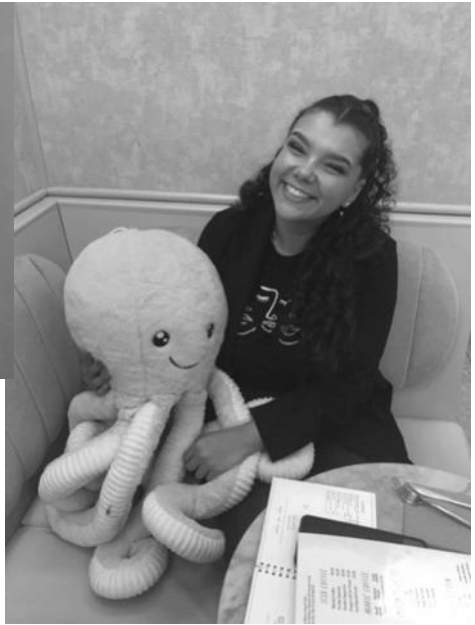
My name is Amelia Hursham, a passionate Marine Biologist, studying at the University of Portsmouth. Some of you will know me as I've been a member of these congregations my whole life. I was christened in 2000 in St. Francis Church, and was confirmed in 2015 at St Mary's Church. I also attended Rivenhall Primary from 2003-2010 and owe my primary education to many of the members of the congregation who taught me to read and write, paving the way for my progression to higher education. Many of my favourite childhood memories are from Sunday school with Reverend Sharon, Claire and Margaret, who sparked my interest at a young age in Marine Biology and ocean life with Bible stories like Jonah and the whale and Noah's ark.

I'm now hoping for some help from members of the Parish; I am looking to raise a total of £5000 for a once in a lifetime research expedition to Indonesia in June 2021 that would kick-start my career as a Marine Biologist. I will be working with some of the world's leading scientists, like minded students and members of the local community helping to restore critically endanger damaged coral reefs and the animals that live there. With your help I will be working for 6 weeks researching how to protect damaged ecosystems and collecting very important data.

To fundraise the money, I am running a sponsored marathon. I am already 2 months into my training with 4 months left to go. I am currently training 5 times a week while still attending my university lectures via zoom, working part time and hosting other fundraising activities. Your donation would be supporting a worthy cause. I would use this opportunity to encourage other young women like myself to pursue a career in STEM (Science, Technology, Engineering and Maths) and to magnify public awareness to conservation and restoration – the key to the future of Gods earth.

If you feel you could offer any support please get in touch with Reverend Paul or the parish treasurer: Ann Clarke: 01376 514825, or myself at UP886015@myport.ac.uk or on Instagram @amelia.runs.a.maraton

Thank you so much! – Amelia.



ASDA ARE
PREPARING INCASE
OF HOME SCHOOLING



Organisations in Rivenhall

Clerk to Parish Council	Keith Taylor	516975
Email parishclerk@rivenhallparishcouncil.net	meets every first Tuesday	
End to End Nature Care	Simon Taylor	01621 810141
Gardening Club	Carole McCarthy	512781
Meets on 2nd Tuesday at 7.30pm in Village Hall		
Carpet Bowls	Mick Marshall	512836
Meets every Thursday at 7.30pm in Village Hall		
Playing Fields Association	Mick Marshall	01376 512836
Spread Your Wings Dance Acam	Laura Pearson	01376 741317

Facilities

Hire of Village Hall	Pauline Marshall	01376 512836
Or email rivenhallvillagehall@gmail.com		
Hire of Henry Dixon Hall	Tracy Scott	571551
Mobile Library 13 April 4 May	Beech Road	9.20 to 9.50. a.m.
Oak Store Rivenhall "Open All Hour" Tel AJ		01376 538838

Organisations in Silver End

Clerk to Parish Council	Mrs B. M. Temple	618464
Email parishclerk@silverendparishcouncil.gov.uk		
Bowls Club	Paul Mann	07551 006906
Children's Centre	Faye Savage	587960
Neighbourhood Police	Braintree Policing Dial	101
Congregational Church	Sharon Gray	583913
Friendship Club	Maureen Green	585275
Silver End Gad Abouts	Denise Sullens Smith	07952 992782
Gardening Club	Liz Woor	585586
Guiding Group	Carol Hutchings	07857 663959
Neighbourhood Watch	Judy Hill	07896 975839
Scouting Group	Denise Sullens Smith	07952 992782
St Mary's Church (R.C.)	Vivian Phillips	583598
Tennis Club	Jason Cairns	584581
Workers Educational Assoc.	Brian Gillion	583706
Luncheon Club	Helen Thomson	583255
Doctors Surgery		583387
Silver End Heritage Society	Jackie Nesbitt	07707 084608
Silver End United Football Club	Mark Edgell	584639 Web
Site www.silverendunitedfc.co.uk		
Women's Institute	Brenda Warnes	07931 548193
Community Warden	Jackie Windard	07785 515526
Post Office in Co-op - please note that it closes at Lunchtime 1-2pm		
Closes 1 pm Wednesday and 12.30 pm Saturday		
Library: Tues & Thurs - 2pm to 6pm Saturday 9am to 1pm		

HUNNABALL

Family Funeral Services



Here **whenever** you need us

Funerals | Memorials | Pre-paid Funeral Plans

Hunnaball of Witham

1 Coach House Way, Newland Street, Witham CM8 1YJ

01376 511592

www.hunnaball.co.uk

JANET C DAVIES

Lady Funeral Directors



**Our Ladies
in Hats**

*"funerals with
a gentle touch"*

Funerals | Memorials
Pre-paid Funeral Plans

Janet C Davies of Kelvedon

233 High Street, Kelvedon CO5 9JD

01376 573691

www.hunnaball.co.uk

DRH LANDSCAPES

Est. 1987

Quality Comes 1st

**Garden Landscape and Design – Hard Landscaping – Soft Landscaping
Grounds Maintenance for Private and Commercial Premises**

- Are you planning to redesign and landscape your garden?
- Does your garden just need a little TLC or a complete makeover?
- Are you looking for assistance with regular garden maintenance or perhaps a one-off visit to get things back in order?
- Is your lawn looking tired? Would you like a new replacement lawn or artificial lawn instead?

We are a family run business with over 30 years of experience working in the ever changing world of landscape management, business regulations and horticulture, with full public and employer liability insurance, as well as being a fully registered waste carrier with the Environmental Agency.



OFFICE: 01376 514142

We welcome...



EMAIL: info@drhlandscapes.com

www.drhlandscapes.com

Harcog Centre, 77-83 Maldon Road, Witham, Essex CM8 1HP

